



# SHUR/Clean™

## Coverslipping DOWNDRAFT Fume Extractor



*Innovations for Science™*

# SHUR/Clean™ Downdraft Fume Extractor

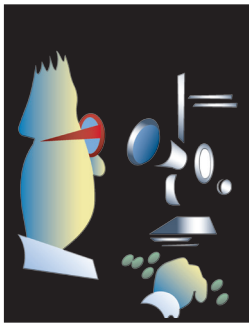
Coverslipping applications utilizing Xylene based mounting mediums.

- ✓ Portable & Compact
- ✓ Unobstructed Work Surface
- ✓ Adequate ventilation of heavy solvents such as Xylene



## Ordering Information:

Cat. #	U/M	Description
SC-DD	ea	SHUR/Clean™ Downdraft Ductless Fume Hood, microprocessor controlled, for xylene mounting medium fume capture. One SC-DD-FR filter combo included. Dimensions WxHxD (24x18x19)in (61x45x49)cm; Weight: 35lbs, 16kg; 100-115VAC, 50/60Hz
SC-DD-220	ea	SHUR/Clean™ Downdraft Ductless Fume Hood, microprocessor controlled, for xylene mounting medium fume capture. One SC-DD-FR filter combo included. Dimensions WxHxD (24x18x19)in (61x45x49)cm; Weight: 35lbs, 16kg; 220-240VAC, 50/60Hz
SC-DD-FR	ea	Replacement filter combo includes one xylene filter and one particle filter; for SC-DD Downdraft Fume Hoods.



Please visit our website for additional product information, technical bulletins, career opportunities, MSDS files, etc.

[www.trianglebiomedical.com](http://www.trianglebiomedical.com)

Distributed By:

**TBS® TRIANGLE BIOMEDICAL SCIENCES, INC.**

3014 Croasdaile Drive • Durham, NC 27705-2507 • USA • 919.384.9393 • Fax: 919.384.9595 • E-Mail: [tbs@trianglebiomedical.com](mailto:tbs@trianglebiomedical.com)

Specifications are current at the time of publication; however, they are subject to change without notification. Please contact our North Carolina office or one of our distributors for current prices and availability. Innovations for Science™, and SHUR/Clean™ are trademarks and TBS® is registered trademark of Triangle Biomedical Sciences, Inc., Durham, North Carolina, USA. October 28, 2011 Version 2.1