

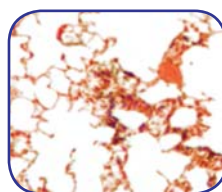
AFB Ziehl Neelson Kit (Hot Method)



Used to identify acid-fast organisms, mainly Mycobacteria. Helpful in diagnosing Mycobacterium tuberculosis since its lipid rich cell wall makes it resistant to Gram stain. Also stains other bacteria like Nocardia. Acid-fast bacilli stain bright red, non-acid fast organisms stain blue or green.

Cat. #: SPS-ZN Size: 1 kit (8oz.)

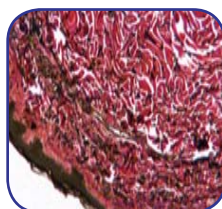
Gram's Stain Kit (with Iodine)



Used to stain microorganisms from cultures or specimens by the differential Gram method. Separates bacterial species into two large groups, those that retain the primary dye (gram-positive) and those that lose the primary dye and take the color of the secondary dye (gram-negative). The mechanism of gram stain is based on the distinctive chemistry and physical properties of the cell wall.

Cat. #: SPS-GSI Size: 1 kit (1gal.)

Verhoeff Van Gieson Elastin Stain Kit

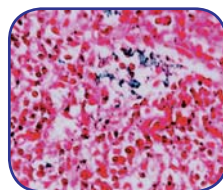


Useful in demonstrating atrophy of elastic tissue in cases of emphysema, thinning and loss of elastic fibers in arteriosclerosis and other vascular diseases. With aging, changes such as splitting and fragmentation occur, these changes are most obvious in the skin which becomes wrinkled and rather loose-fitting.

Cat. #: SPS-GE Size: 1 kit (500ml.)

Prussian Blue Iron Stain Kit

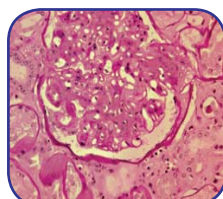
Reaction for the Demonstration of Iron



Histochemical reaction used to demonstrate ferric iron and ferritin. This is not a true staining technique. Protein is split off by the hydrochloric acid, allowing the potassium ferrocyanide to combine with the ferric iron. This forms the ferric ferrocyanide or Prussian Blue. 10% NBF or alcohol can be used. Deparaffinize slides through xylene or substitute to remove paraffin from the section and descending grades of alcohol to water just prior to staining.

Cat. #: SPS-PBI Size: 1 kit (250ml.)

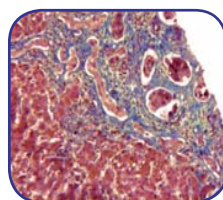
Periodic Acid Schiff's (PAS) Stain Kit



Used to demonstrate polysaccharides, neutral mucosubstances and basement membranes primarily in tissue. The demonstration of glycogen is best represented by a section of liver with a digestion step used as a negative control in the staining. Kit is supplied with Harris Hematoxylin Acidified as the counterstain.

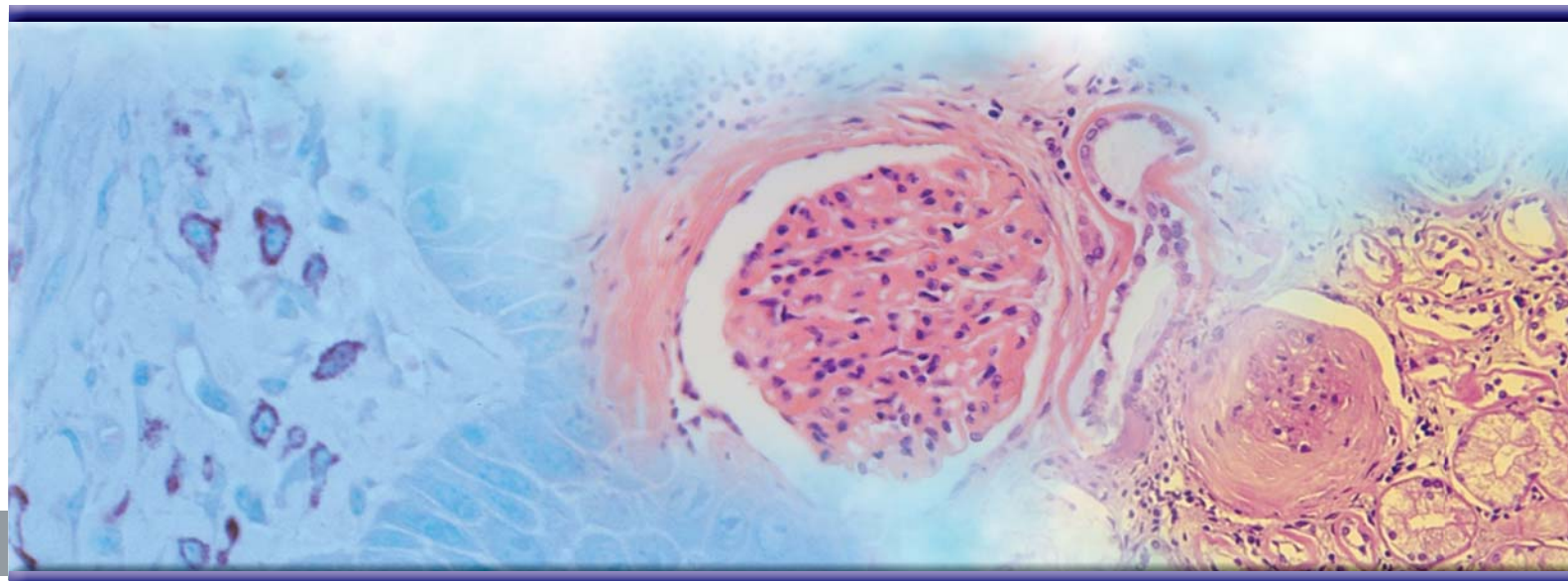
Cat. #: SPS-PAS Size: 1 kit (250ml.)

Masson's Trichrome Stain Kit



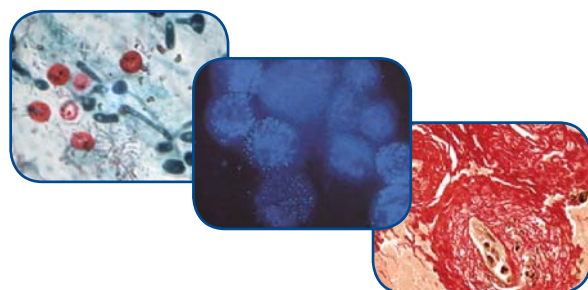
This method is used for the detection of collagen fibers in tissues such as skin, heart, etc. on formalin-fixed, paraffin-embedded sections and may be used for frozen sections as well. Collagen fibers stained blue and nuclei stained black.

Cat. #: SPS-MTS Size: 1 kit (250 /500ml.)



NEW Special Stains

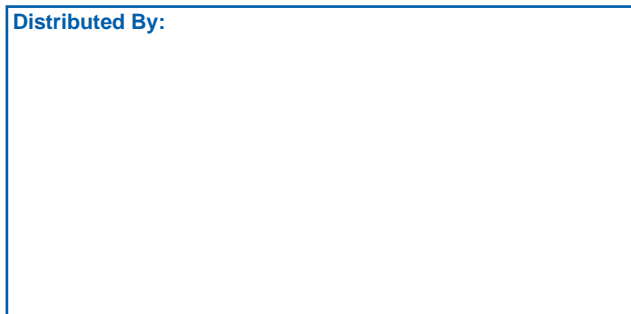
Cat. #	Size:
SPS-ABP	Alcian Blue Pas Stain Kit (500ml.)
SPS-F	Fontana Masson Stain Kit (100/500ml.)
SPS-CI	Collodial Iron Stain Kit (500ml.)



Please visit our website for additional product information, technical bulletins, career opportunities, MSDS files, etc.

www.trianglebiomedical.com

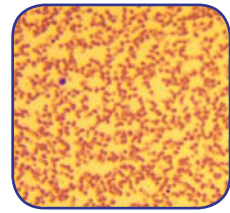
Distributed By:



- ◆ *Embedding*
- ◆ *Grossing & Frozen Sectioning*
- ◆ *Fixation*
- ◆ *Mounting Media*
- ◆ *Microtomy/Sectioning*
- ◆ *Processing*
- ◆ *Routine & Special Stains*

Grossing & Frozen Sectioning

Differential Quik Stain Kit (Modified Giemsa)



High quality, rapid turnaround staining kit. Useful for differential assessment of blood smears, detecting *H. pylori* microorganisms and immediate interpretation of fine needle aspiration biopsies. Kit contains a fixative for air-dried cell suspensions and/or touch preparation slides. Results in as little as 15 seconds!

Cat. #: SPS-MG Size: 1gal/ea

Tissue Marking Dyes - TMD™



Our Marking Dyes for Tissue are designed to perfect orientation of excised surgical specimens. This method of permanently marking the margins of tissue specimens are beneficial to surgeons and pathologists testing for skin cancer. Available colors: red, green, blue, yellow, black, orange and purple.

Features:

- No post fixative required - saves time
- Fast drying - high quality opaque pigments
- Dyes can be used on fresh or formalin fixed specimens
- Maintains brilliant color through all phases of processing

Cat. #	Size:
TMD-7	1 Kit (7 Colors) BLACK (BK), BLUE (BL), YELLOW (Y), RED (R), GREEN (G), ORANGE (O), PURPLE (P); 2oz/ea; 4ea/cs
TMD-(color)	Specify color: BLACK (BK), BLUE (BL), YELLOW (Y), RED (R), GREEN (G), ORANGE (O), PURPLE (P); 8oz/ea; 4ea/cs

Tissue Freezing Medium - TFM™



Embedding matrix for frozen sections and muscle enzyme histochemistry. Reduces curling, allowing easier pickup of flat serial sections. Material sections flawlessly for routine frozen specimen thickness of 4-6µm and leaves no residue on the slide. Optimal freezing range is -8°C or lower. Water soluble.

Cat. #	Size:
TFM-5	1 Kit (5 Colors) CLEAR (C), RED (R), YELLOW (Y), GREEN (G), BLUE (BL); 4oz/ea; 4 ea/cs
TFM-C	Color: CLEAR (C); 4oz/ea; 12ea/cs
TFM-(color)	Specify color: CLEAR(C), RED (R), YELLOW (Y), GREEN (G), BLUE (BL); 4oz/ea; 4ea/cs

Microtomy/Sectioning

PARA/Gard™ Paraffin Repellent



Xylene free paraffin repellent. Used to create a protective coating on surfaces exposed to paraffin as well as to clean adhering paraffin off laboratory counter tops and equipment. **PARA/Gard™** will help keep your equipment and counter tops clean and tidy.

Cat. #: PG Size: 4 oz. pump btl/ea, 6 ea/cs
PG-16 Size: 16 oz. spray btl/ea, 4 ea/cs

Embedding Paraffin

POLY/Fin™ Paraffin



Mixture of fine paraffin waxes and copolymer alloys in convenient pellets. Produces ultra-thin compression free ribbons. Functions flawlessly in pressure/vacuum fluid flow processors for both infiltration and embedding. Provides maximum support for both hard and soft tissue samples while maintaining exceptional clarity. Low 55°C melting point eliminates excessive heat distortion during tissue processing.

Cat. #: PF Size: 8x1 kg/cs (17.6lbs)
PF-15KG Size: 15 kg drum (33lbs)

Mounting Media

SHUR/Mount™ Coverslipping Mounting Medium



Non-water soluble (xylene/toluene) liquid coverslipping media designed to eliminate the use of coverslips. Non-yellowing and scratch resistant, **SHUR/Mount™** Mounting Medium simplifies the protection of prepared slides. Refractive index is near 1.48 and can be removed if necessary by soaking in toluene or xylene. Ideal for uneven thick sections that cause air bubbles under a coverslip with routine procedures. Viscosity: 149 cps.

Cat. #	Size:	Cat. #	Size:
LC	Toluene Based 4oz (118ml)/ea, 12 ea/cs	LC-A	Low Viscosity, Xylene Based 16oz (471ml)/ea, 4 ea/cs
LC-16	Toluene Based 16oz (471ml)/ea, 4 ea/cs	LC-W	Water Based 1oz (20ml)/ea, 4 ea/cs

Processing

PARA/Clear™ (Odorless) - Xylene Substitute



PARA/Clear™ will remove alcohol during the final steps of routine tissue processing and is miscible with paraffin for infiltration. It has a higher flash point than xylene, reducing the flammability danger to the laboratory.

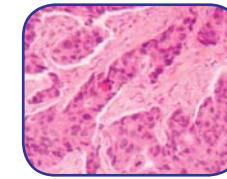
Cat. #: C-1G Size: 1gal/ea.

Alcohols

Cat. #	Size:
C-X1G	Xylene Clearing Solvent; ACS Grade; 1Gal/ea, 4ea/cs
A-11G	Isopropanol - 99.99%, Isopropyl Alcohol; ACS/USP Grade; 1Gal/ea, 4ea/cs
A-100RA	Reagent Alcohol, 100% - SDA 3A, 95%, Isopropyl 5%; ACS/USP Grade; 1Gal/ea, 4ea/cs
A-95RA	Reagent Alcohol, 95% - SDA 3A, 95%, Isopropyl 5%; ACS/USP Grade; 1Gal/ea, 4ea/cs
A-5050RA	SHUR/Blend™ - Reagent Alcohol/Isopropyl Alcohol Blend, 1Gal/ea, 4ea/cs

Routine Stains

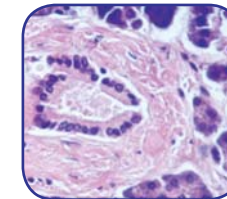
Gill's #2, double strength for Histology & Cytology



Used when a stronger or darker nuclear stain is required for cytology or immunohistochemistry (IHC) counterstaining. Gill's #2 formulation is a double strength mixture, stains darker and more quickly than Gill's #1. General purpose nuclear stain, progressive type. Used with hematoxylin and eosin staining.

Cat. #: H-G21L Size: 1L/ea

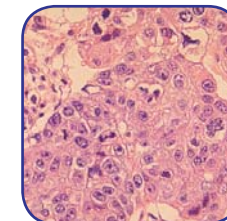
Gill's #3, triple strength for Histology



Appropriate for routine histology staining where a darker nuclear stain is desired. This is a triple strength formula requiring shorter staining times. Formula is very stable and does not require filtering prior to each use. General purpose nuclear stain, progressive type. Used with hematoxylin and eosin staining.

Cat. #: H-G31L Size: 1L/ea

Harris Hematoxylin, Acidified (mercury-free)

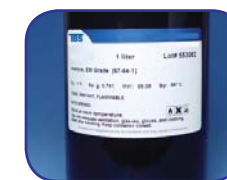


Used with hematoxylin and eosin staining. Use Harris Hematoxylin for routine histology and cytology. Similar results can be achieved to those of Gill's Hematoxylin #1, #2 and #3 formulations by varying staining times. General purpose nuclear stain, regressive type.

Cat. #: H-HAMF1P Size: 500ml/ea

Fixation

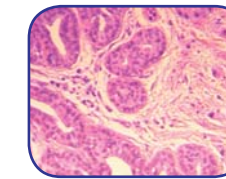
Acetone, 99.5% - EM grade



For hardening and dehydrating tissues. Can also be used for the extraction of various principles from animal and plant substances.

Cat. #: A-EM16 Size: 1L/ea

Eosin Y, 1.0% alcoholic solution, Non-Acidic



Cytoplasmic counterstain useful in immunohistochemistry or treatment of tissue sections with hematoxylin. Contains no acetic acid. Ready-to-use with any automated stainer.

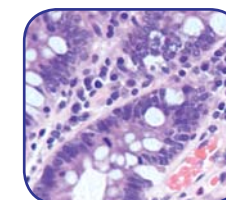
Cat. #: E-1Y1P Size: 1pt/ea
E-YP50GR Size: 50gm/ea

Lithium Blue

Lithium Blue is a gentle yet rapid formulation for bluing hematoxylin in only 5 minutes. Lithium Blue is buffered at an alkalinity of pH 8.0. Our premixed and ready-to-use Lithium Blue provides crisp nuclear detail obtained with Gill's, Mayer's and Harris' Hematoxylin stains. For use in both cytology and histology.

Cat. #: L-B1G Size: 1 gal/ea

Scott's Bluing Reagent



Gentle bluing reagent formulation for those specimens that may be affected by more harsh agents. Our premixed and ready-to-use Scott's Bluing Reagent provides rapid bluing and crisp nuclear detail obtained with routine hematoxylin and eosin stains. For use in both cytology and histology.

Cat. #: R-SB1G Size: 1 gal/ea

Zinc Formalin Fixative, pH 6.25



Excellent morphological preservation of nuclear & cytoplasmic components. Can replace neutral buffered formalin for routine tissue and immunohistochemical procedures. Best used as a primary fixative, minimizing denaturation.

Cat. #: F-Z1G Size: 1gal/ea

Formalin, 10% neutral buffered (phosphate buffer)

Widely used fixative for processing tissues in routine histology laboratories. For IHC in clinical laboratories for paraffin embedded tissue.

Cat. #: F-10NB1G Size: 1 gal/ea
F-10NB5G Size: 5 gal/ea