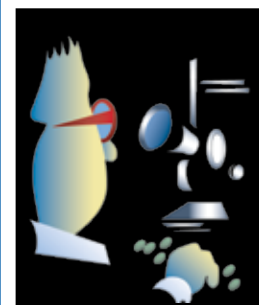
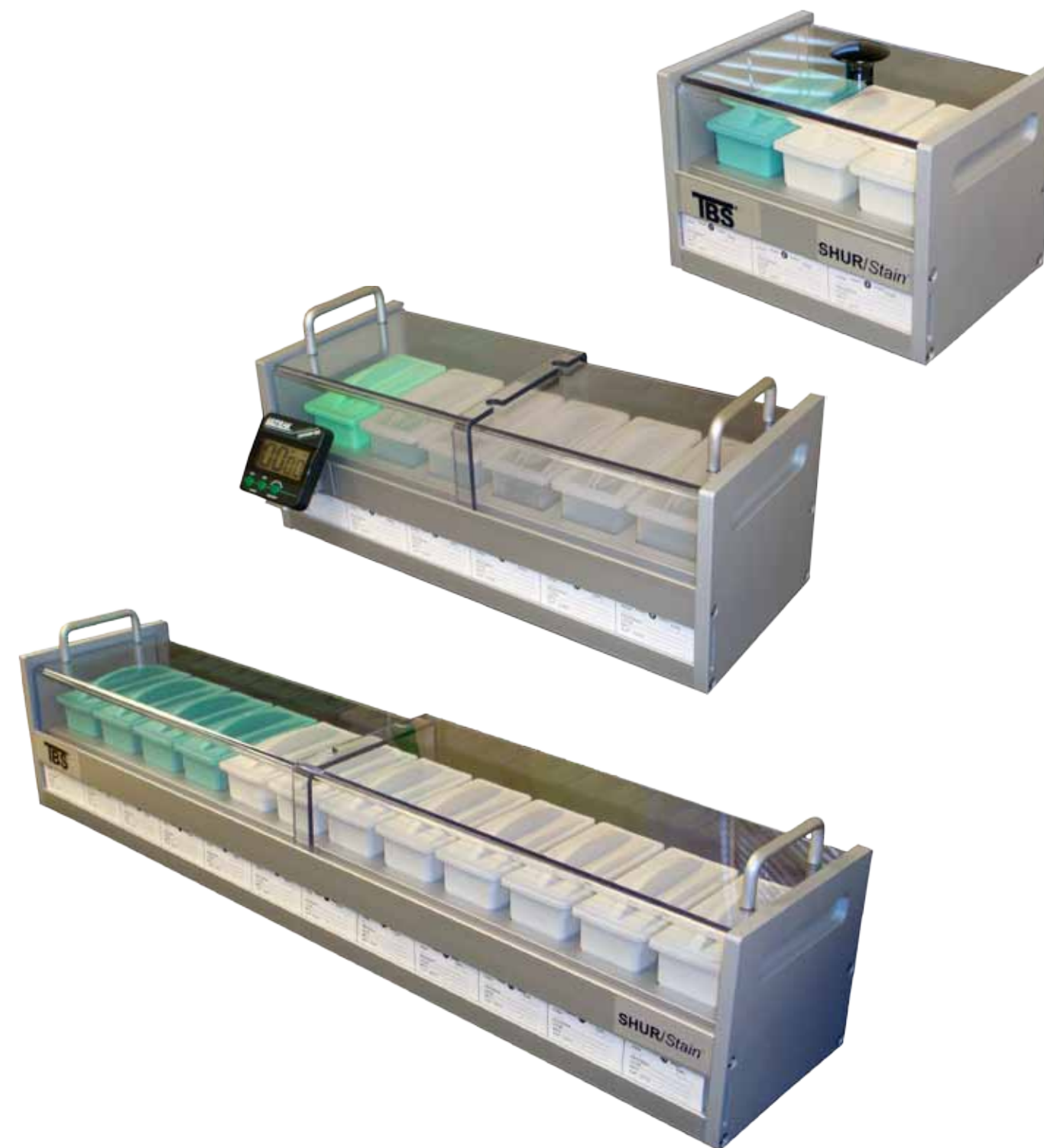


Ordering Information:

SS-3L	SHUR/Stain™ Manual Stain Rack , 3 position; includes 2 white 250ml wells (SS-WLW), 1 green solvent resistant 250 ml well (SS-WLG), 1ea. 24-position plastic slide carrier (SS-SRG-24). Individual lids are provided for use during extended inactivity & a see-through lexan cover is included for convenience & safety during periods of frequent use. Multiple racks can be attached back to back. Digital timer and (12) label strips included (SS-LS-3L) to record reagent expiration dates, lot #'s, etc. Dimension DxWxH, (6x8x7)in (160x203-x178)mm
SS-6L	SHUR/Stain™ Manual Stain Rack , 6 position; includes 4 white 250ml wells (SS-WLW), 2 green solvent resistant 250 ml well (SS-WLG), 1ea. 24-position plastic slide carrier (SS-SRG-24). Individual lids are provided for use during extended inactivity & see-through lexan cover is included for convenience & safety during periods of frequent use. Multiple racks can be attached back to back. Digital timer and (12) label strips included (SS-LS-6L) to record reagent expiration dates, lot #'s, etc. Dimension DxWxH, (6x15x6)in (160x375x156)mm
SS-12L	SHUR/Stain™ Manual Stain Rack , 12 position; includes 8 white 250ml wells (SS-WLW), 4 green solvent resistant 250 ml well (SS-WLG), 1ea. 24-position plastic slide carrier (SS-SRG-24). Individual lids are provided for use during extended inactivity & see-through lexan cover is included for convenience & safety during periods of frequent use. Multiple racks can be attached back to back. Digital timer and (12) label strips included (SS-LS-12L) to record reagent expiration dates, lot #'s, etc. Dimension DxWxH, (6x28x6)in (160x718x156)mm
SS-SRG-24	Slide Rack, plastic, Grey, 24-position, solvent resistant
SS-WLW	Well, 250ml, w/ lid, white
SS-WLG	Well, 250ml. w/ lid, green, xylene resistant
SS-DT	Digital Timer, countdown, built-in memory, loud alarm, large display
SS-LS-3L	Label Strip, replacement strip for SS-3L with 3 data entry positions, 8", 12 ea/pk
SS-LS-6L	Label Strip, replacement strip for SS-6L with 6 data entry positions, 15", 12 ea/pk
SS-LS-12L	Label Strip, replacement strip for SS-12L with 12 data entry positions, 28", 12 ea/pk

TBS®**SHUR/Stain™ Manual Stainers**

Please visit our website for additional product information, technical bulletins, career opportunities, MSDS files, etc.

www.trianglebiomedical.com

Distributed By:

TBS® **TRIANGLE BIOMEDICAL SCIENCES, INC.**
 3014 Croasdaile Drive • Durham, NC 27705-2507 • USA • 919.384.9393 • Fax: 919.384.9595 • E-Mail: tbs@trianglebiomedical.com

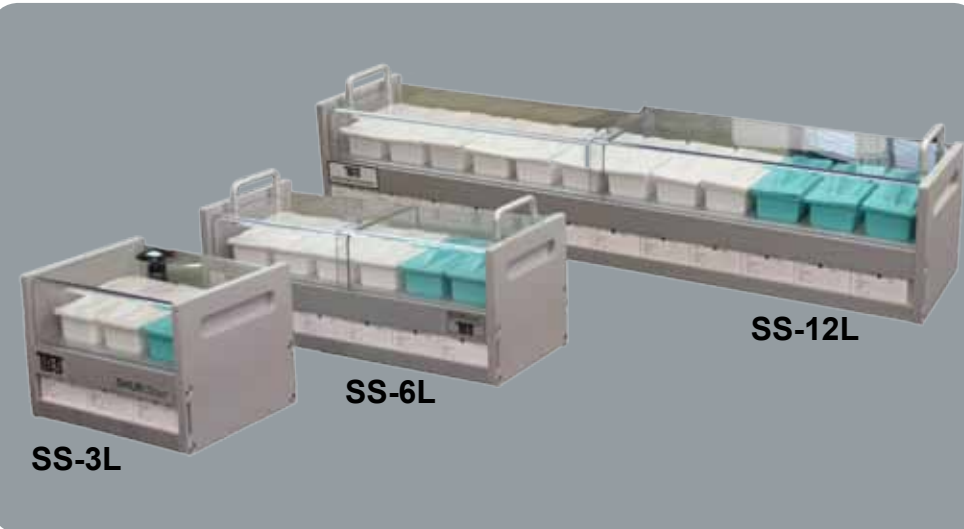
Innovations for Science™

Specifications are current at the time of publication; however, they are subject to change without notification. Please contact our North Carolina office or one of our distributors for current prices and availability. Innovations for Science™ and SHUR/Stain™ are trademarks and TBS® is registered trademark of Triangle Biomedical Sciences, Inc., Durham, North Carolina, USA. August 25, 2011 Version 2.0

SHUR/Stain™ Manual Stainer

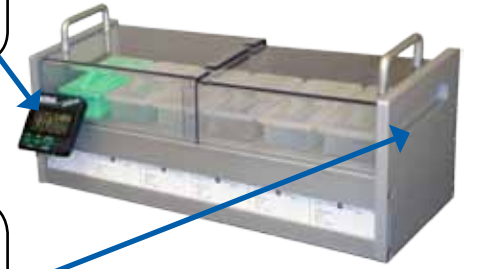
Select the number of individual staining positions necessary to meet your histology, cytology, dermatology, immunohistochemical, hematology, microbiology or special staining application. The 250ml staining dish version is produced in 3, 6, & 12 well configurations.

Well depths are designed for immersion of 1"x3" slides. Metal extruded frames inter-lock for back-to-back connection of multiple racks. Plastic dishes are solvent resistant and include lids for limiting evaporation when not in frequent use. The SS-3L model has a removable lexan see-through cover that covers the entire staining assembly. All the other sizes have sliding lexan see-through covers and are conveniently accessed from either end. Having sliding see-through covers significantly reduces solvent evaporation without having to remove & replace individual well lids between staining protocols like is required with competitive products.



Digital Timer

Countdown timer with loud alarm attaches directly to the stainer with convenient bracket or small enough to carry in your pocket



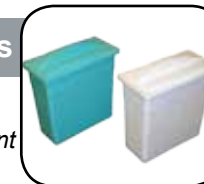
Built-In Handles

Built-in cut-outs for conveniently moving staining racks around the lab.



Replacement Wells

250ml green (SS-WLG) & white (SS-WLW) replacement wells are available



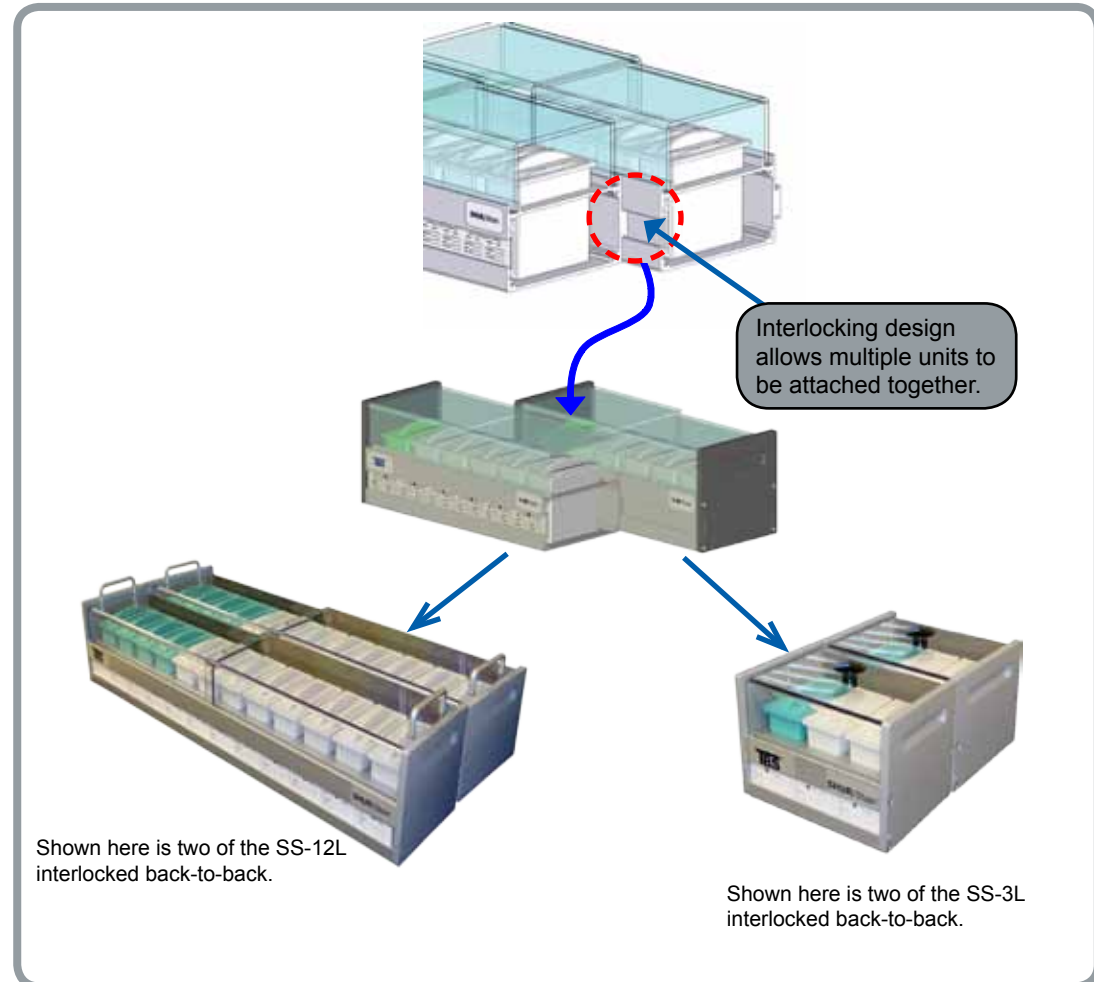
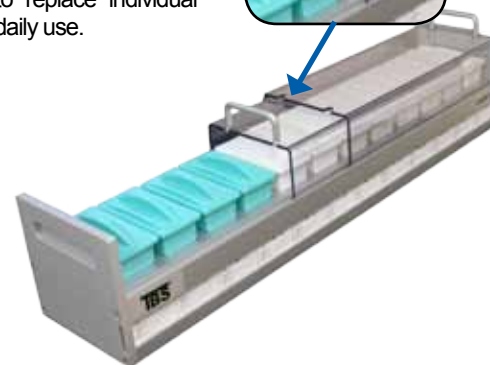
Slide Carrier

24-position solvent resistant plastic slide carrier (SS-SRG-24)



Convenient Access

Sliding lid opens from either end to minimize reagent evaporation. No need to replace individual lids during daily use.



Each SHUR/Stain™ rack comes with a supply of replaceable documentation strips to record reagent brand, lot #, date changed, etc. The number of data positions is proportional to the number of wells.

1		2		3	
Initial	Date	Initial	Date	Initial	Date
AC	07/14/2009				
REAGENT: HEM		REAGENT: _____		REAGENT: _____	
LOT#: 29007A		LOT#: _____		LOT#: _____	
MFG.: TBS		MFG.: _____		MFG.: _____	
EXP. DATE: Feb 6, 2011		EXP. DATE: _____		EXP. DATE: _____	