

SHUR/Wave™ – Save \$ on Solution Use & Reagent Disposal Costs

Rack	Cass/Run (QTY)	Volume (L)
Small	1 - 18	0.36
	19 - 36	0.60
Medium	1 - 32	0.50
	33 - 64	0.80
Large	1 - 56	0.80
	57 - 112	1.60

SHUR/Wave™ utilizes an efficient container system for processing multiple layers of cassettes in several vessel sizes. Select the container for each run based on the number of specimens being processed and only fill the container to the level required to cover the cassettes. The Small Processing Rack Assembly (shown right) w/ 2 cassette holder discs of 18 cass/ea can process 36 cassettes, the Medium 64 & the Larger Processing Rack 112. **Reagent savings is significant.**



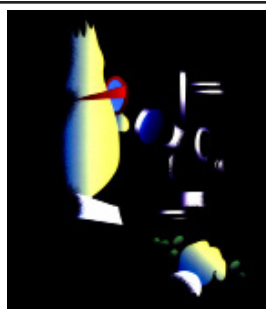
Specifications

Dual magnetrons, waveguides & stirrers; rated to 1200 watts; PID (Proportional, Integral, Differential) temperature control; Programmable Microprocessor 8" Color Touch Screen Controller; Stainless steel interior with ceramic floor; Vented chamber w/ 8" rotatable standard 4" duct; Vent interlock failure shutdown safety system; Magnetron prewarming; Infinitely variable power w/ continuous or pulsed operation; Adjustable Air agitation system; Thermocouple temperature probe; Air ports; Safety interlock door & Dual Over-temperature sensors

Dimensions: Instrument 17(422) L • 20(500) W • 20(513) H
 in(mm) Chamber 13(330) L • 12(307) W • 7(165) H
 Weight lb(kg): Actual 80(36) Shipping 180(82)

Ordering Information:

Cat. #		Description
SW-120	Ea	SHUR/Wave™ Laboratory Microwave, Includes dual magnetrons, dual waveguides and dual stirrers with 8ft vent tubing kit. 100-120VAC, 50/60Hz, 20A; Requires SW2700 or SW2900 Histoprocessing rack assembly.
SW-220	Ea	SHUR/Wave™ Laboratory Microwave, Includes dual magnetrons, dual waveguides and dual stirrers with 8ft vent tubing kit. 220-240VAC, 50/60Hz, 10A; Requires SW2700 or SW2900 Histoprocessing rack assembly.
SW-2700	Ea	Processing Rack Assembly, Small, 36 cass cap; includes glass bowl, 2 cassette holder discs (18 cap/ea) and cover.
SW-2800	Ea	Processing Rack Assembly, Medium, 64 cass cap; includes glass bowl, 2 cassette holder discs (32 cap/ea) and cover.
SW-2900	Ea	Processing Rack Assembly, Large, 112 cass cap; includes glass bowl, 2 cassette holder discs (57 cap/ea) and cover.
SW-2750	Ea	Bowl, Small, 36 cass cap. Incl: small glass bowl (SW2701), bowl removal handle (SW2732) and bowl cover (SW2736).
SW-2850	Ea	Bowl, Medium, 64 cass cap. Incl: medium glass bowl (SW2801), bowl removal handle (SW2832) and bowl cover (SW2836).
SW-2950	Ea	Bowl, Large, 112 cass cap. Incl: large glass bowl (SW2901), bowl removal handle (SW2932) and bowl cover (SW2936)
SC-36WOME-TV	Ea	SHUR/Clean™ 36" Passive Open-Front Fume Hood. Requires ducting to HVAC system by user. Top (-TV) 6" OD exhaust ports. Dimensions WxDxH: EXTERNAL: (36x26x28) (91x66x71)(in)(cm); INTERNAL: (34x25x27)(86x64x69)(in)(cm); Weight: 26lbs, 12kg. Hood accommodates the following number of reagent bowls when used with SHUR/Wave™ Microwave Tissue Processor and optional SHUR/Clean™ Reagent Bowl Shelf (SC-SW-36R): 4 large, 4 med. or 4-6 small bowls.
SC-36WOME-RV	Ea	SHUR/Clean™ 36" Passive Open-Front Fume Hood. Requires ducting to HVAC system by user. Rear (-RV) 6" OD exhaust ports. Dimensions WxDxH: EXTERNAL: (36x26x28) (91x66x71); INTERNAL: (34x25x27) (86x64x69)(in)(cm); Weight: 26lbs, 12kg. Hood accommodates the following number of reagent bowls when used with SHUR/Wave™ Microwave Tissue Processor and optional SHUR/Clean™ Reagent Bowl Shelf (SC-SW-36R): 4 large, 4 med. or 4-6 small bowls.
SC-48WOME-TV	Ea	SHUR/Clean™ 48" Passive Open-Front Fume Hood. Requires ducting to HVAC system by user. Top (-TV) 6" OD exhaust ports. Dimensions WxDxH: EXTERNAL: (48x26x28) (122x66x71)(in)(cm); INTERNAL: (46x25x27)(117x64x69)(in)(cm). Weight: 32lbs, 15kg. Hood accommodates the following number of reagent bowls when used with SHUR/Wave™ Microwave Tissue Processor and optional SHUR/Clean™ Reagent Bowl Shelf (SC-SW-48R): 8 large, 8 med. or 10 small bowls.
SC-48WOME-RV	Ea	SHUR/Clean™ 48" Passive Open-Front Fume Hood. Requires ducting to HVAC system by user. Rear (-RV) 6" OD exhaust ports. Dimensions WxDxH: EXTERNAL: (48x26x28) (122x66x71)(in)(cm); INTERNAL: (46x25x27)(117x64x69)(in)(cm). Weight: 32lbs, 15kg. Hood accommodates the following number of reagent bowls when used with SHUR/Wave™ Microwave Tissue Processor and optional SHUR/Clean™ Reagent Bowl Shelf (SC-SW-48R): 8 large, 8 med. or 10 small bowls.



Please visit our website for additional product information, technical bulletins, career opportunities, MSDS files, etc.

www.trianglebiomedical.com

Distributed By:

TBS®

SHUR/Wave™ Laboratory Microwave

The Next "WAVE" in Tissue Processing Technology



Innovations for Science™

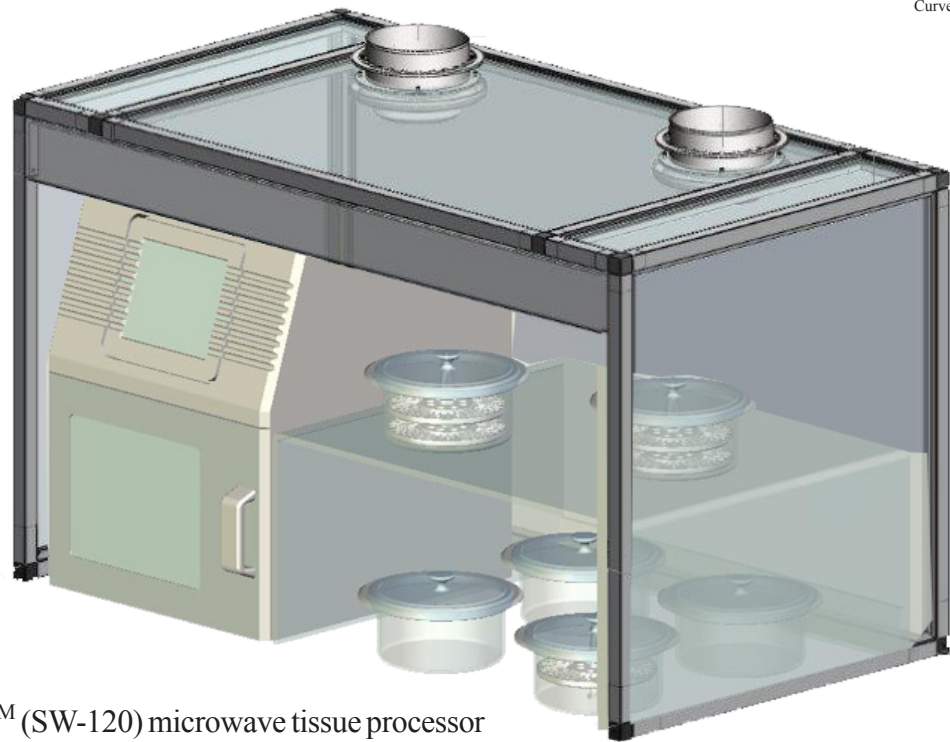
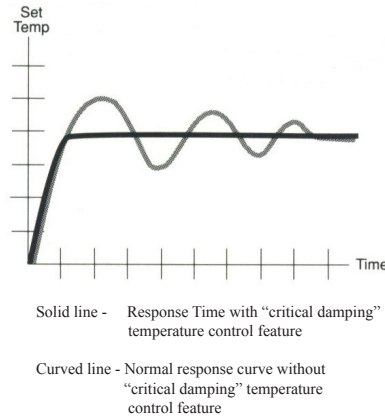
TBS® TRIANGLE BIOMEDICAL SCIENCES, INC.
 3014 Croasdaile Drive • Durham, NC 27705-2507 • USA • 919.384.9393 • Fax: 919.384.9595 • E-Mail: tbs@trianglebiomedical.com

Specifications are current at time of publication; however, they are subject to change without notification. Please contact our North Carolina office or one of our distributors for current prices and availability. Innovations for Science™ and SHUR/Wave™ are trademarks and TBS® is a registered trademark of Triangle Biomedical Sciences, Inc., Durham, NC, USA.
 December 12, 2011

SHUR/Wave™ – Quality results in a fraction of the time and expense

Specifically designed for tissue fixation and processing, SHUR/Wave™ is also ideal for specimen stabilization & hardening, epitope retrieval, and, to accelerate decalcification & staining. Biopsy specimens can be fixed in 10 minutes and processed in 30 while larger specimens can be fixed in under an hour and processed in less than two hours. Bone marrow biopsies can even be done in as little as 3 to 10 minutes...and, all at a fraction of the reagent cost of conventional fluid flow processors!

Dual Magnetron 1200 watt system with PID temperature controller. No need for water cooling or hazardous pressure vacuum containers. Color Touch Screen with user-friendly controls. Air-Bubbling Agitation maximizes Fluid/Thermal Exchange. Ceramic and SS Interior for Ease of Cleaning



SHUR/Wave™ (SW-120) microwave tissue processor shown w/ 6 SW-2950 large containers all enclosed in an SC-36WOME-TV ductless fume hood. Meets CAP regulations for histology microwave fume control.

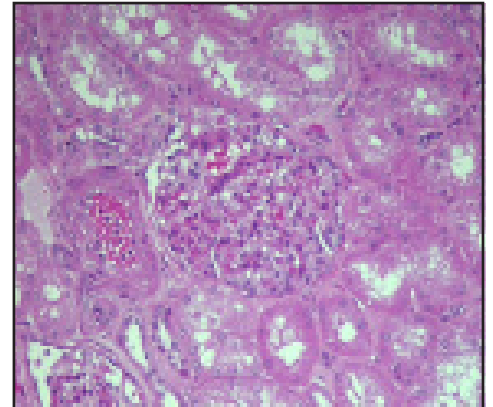
SHUR/Wave™ does it all!

SHUR/Wave™ ...Uncompromised Quality... Superior Sectioning Characteristics



Mouse eye processed in the SHUR/Wave™ in 60 minutes. Compliments of Donna Brown, HT(ASCP), Eli Lilly, Greenfield, IN

Histological microwave technology began with the use of microwaves to reduce the time required to do special stains. Recent microwave research has focused on the need to accelerate and enhance more lengthy procedures such as fixation, processing and decalcification. Accelerating these techniques safely results in faster diagnoses for clinicians and less anxiety for patients. Meet the challenges of today's competitive health-care environment... phone to have your TBS representative demonstrate SHUR/Wave™ in your laboratory.



Compliments of Donna Willis HT(ASCP)HTL and Patricia Fenderson, MD, PhD, Harris Methodist Ft. Worth, TX

Minimal Turn-Around Time...SHUR/Wave™ ... Same Day

Specimens can now be fixed and processed in a fraction of the time required by conventional over-night fluid-flow processors. The chart at the right shows approximate times required for various steps by specimen size. It is now possible to provide the patient with same day results.

SPECIMEN Thickness (mm)	FIXATION		PROCESSING	
	SHUR/Wave (min)	Routine (hrs)	SHUR/Wave (min)	Routine (hrs)
Biopsy	10	2	15	2
2	30	6	48	4
3	50	24	60	6
4	55	48	120	8

Intuitive User Interface...No Experience Required ...SHUR/Wave™

8" color membrane touch screen with internal microprocessor has user-friendly controls in multiple languages and graphic readouts of time at temperature. Built-in quality control program can be run to document adequate line voltage and magnetron's power output. Creating, storing and running programs can be mastered in a matter of minutes. Several representative screens are shown below. Call your local TBS Dealer or contact us at

<http://www.trianglebiomedical.com> to arrange for an on-site demo.

