

SHUR/Wave™ – Save \$ on Solution Use & Reagent Disposal Costs

Rack	Cass/Run (QTY)	Volume (L)
Small	1 - 18	.5
	19 - 36	1.0
Large	1 - 32	.75
	33 - 64	1.25
	65 - 96	1.75

SHUR/Wave™ utilizes an inexpensive container system to allow for processing of multiple layers of cassettes in both large and small diameter vessels. Select the container for each run based on the number of specimens being processed and only fill the container to the level required to cover the cassettes. Small Processing Rack Assembly (shown right) w/ 2 cassette holder discs of 18 cass/ea for a total capacity of 36 cassettes. Larger Processing Rack Assembly holds 3 levels of 32 cassettes per level or 96 total. **Reagent savings is significant.**




Specifications

Dual magnetrons, waveguides & stirrers; rated to 1200 watts; PID (Proportional, Integral, Differential) temperature control; Programmable Microprocessor 8" Color Touch Screen Controller; RS232 serial port communication; Stainless steel interior with ceramic floor; Vented chamber w/ 8" rotatable standard 4" duct; Vent interlock failure shutdown safety system; Magnetron prewarming; Infinitely variable power w/ continuous or pulsed operation; Adjustable Air agitation system; Thermocouple temperature probe; Dual air/fluid ports; Safety interlock door & Dual Over-temperature sensors

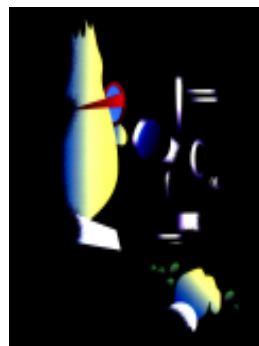
Dimensions:	Instrument	17(422) L • 20(500) W • 20(513) H	Weight lb(kg):	Actual	80(36)
	in(mm) Chamber	13(330) L • 12(307) W • 7(165) H		Shipping	180(82)

SHUR/Wave™ has been tested by a registered independent body to rigorous international quality and safety standards and has been found to be in compliance with the following regulations and specifications:

	UL	61010A
	CSA	1010-1
	CE	EN/IEC EN61010-1, Safety
		EN61000-3-2, Harmonic Distortion EN55011, Emissions EN61326, Immunity EN61000-3-3, Voltage Fluctuation/Flicker

Ordering Information

Cat #	U/M	Description
SW-120	ea	SHUR/Wave™ Laboratory Microwave, Includes dual magnetrons, dual waveguides and dual stirrers with 8ft vent tubing kit. 100-120VAC, 50/60Hz, 20A; Requires SW2700 or SW2900 Histoprocessing assembly.
SW-220	ea	SHUR/Wave™ Laboratory Microwave, includes dual magnetrons, dual waveguides and dual stirrers with 8ft vent tubing kit. 220-240VAC, 50/60Hz, 10A; Requires SW2700 or SW2900 Histoprocessing assembly.
SW-2700	ea	Processing Rack Assembly, small, includes glass bowl, 2 x (18 capacity) cassette holder discs and cover.
SW-2900	ea	Processing Rack Assembly, large, includes glass bowl, 3 x (32 capacity) cassette holder discs and cover.



Please visit our website for additional product information, technical bulletins, career opportunities, MSDS files, etc.

www.trianglebiomedical.com

Distributed By:

SHUR/Wave™

The Next "WAVE" in Tissue Processing Technology



TBS TRIANGLE BIOMEDICAL SCIENCES, INC.

3014 CROASDALE DRIVE • DURHAM, NORTH CAROLINA 27705-2507 • USA • 919.384.9393 • FAX: 919.384.9595 • EMAIL: tbs@trianglebiomedical.com

Specifications are current at time of publication; however, they are subject to change without notification. Please contact our North Carolina office or one of our distributors for current prices and availability. Innovations for Science™ and SHUR/Wave™ are trademarks and TBS® is a registered trademark of Triangle Biomedical Sciences, Inc., Durham, NC, USA.

Litho in U.S.A. Printed June 2006

Bulletin #2.5.0

SHUR/Wave™ – Quality results in a fraction of the time and expense

Specifically designed for tissue fixation and processing, SHUR/Wave™ is also ideal for specimen stabilization & hardening, epitope retrieval, and, to accelerate decalcification & staining. Biopsy specimens can be fixed in 10 minutes and processed in 15 while larger specimens can be fixed in under an hour and processed in less than two hours. Bone marrow biopsies can even be done in as little as 3 to 10 minutes...and, at a fraction of the reagent cost of conventional fluid flow processors!

Color Touch Screen

with

User-friendly controls



Ceramic and SS Interior

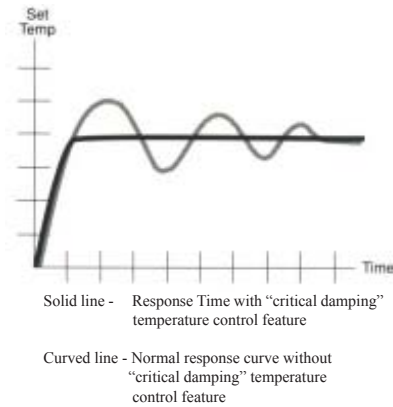
for

Ease of Cleaning

Dual Magnetron System & PID temperature controller

produce

Rapid, safe and consistent results

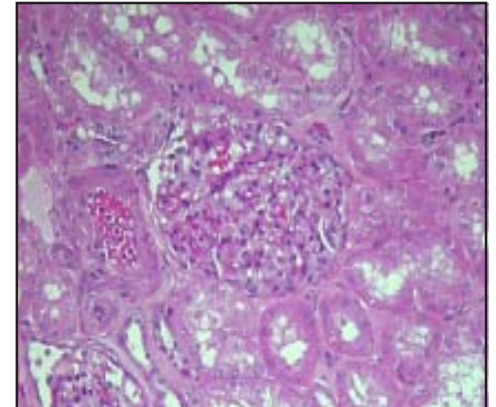


SHUR/Wave™ ...Uncompromised Quality... Superior Sectioning Characteristics



Mouse eye processed in the SHUR/Wave™ in 60 minutes.
Compliments of Donna Brown, HT(ASCP), Eli Lilly, Greenfield, IN

Histological microwave technology began with the use of microwaves to reduce the time required to do special stains. Recent microwave research has focused on the need to accelerate and enhance more lengthy procedures such as fixation, processing and decalcification. Accelerating these techniques safely results in faster diagnoses for clinicians and less anxiety for patients. Meet the challenges of today's competitive healthcare environment... phone to have your TBS representative demonstrate SHUR/Wave™ in your laboratory.



Compliments of Donna Willis HT(ASCP)HTL and Patricia Fenderson, MD, PhD, Harris Methodist Ft. Worth, TX

Minimal Turn-Around Time...SHUR/Wave™... Same Day Results

Specimens can now be fixed and processed in a fraction of the time required by conventional over-night fluid-flow processors. The chart at the right shows approximate times required for various steps by specimen size. It is now possible to provide the patient with same day results.

SPECIMEN Thickness (mm)	FIXATION		PROCESSING	
	SHUR/Wave (min)	Routine (hrs)	SHUR/Wave (min)	Routine (hrs)
Biopsy	10	2	15	2
2	30	6	48	4
3	50	24	60	6
4	55	48	120	8

Intuitive User Interface...No Experience Required...SHUR/Wave™

8" color membrane touch screen with internal micro-processor has user-friendly controls in multiple languages, remote diagnostic capabilities and graphic readouts of time at temperature. Built-in quality control program can be run to document adequate line voltage and magnetron output. Creating, storing and running programs can be mastered in a matter of minutes. Several representative screens are shown below. Call your local TBS Dealer or contact us at <http://www.trianglebiomedical.com> to arrange for an on-site demo.



SHUR/Wave™ does it all!